

The



Factor

SPRING 2007



What's inside:

- ◆ *Power Systems III – Why CPI Customers Come Back*
- ◆ *Icearium Expands*
- ◆ *CPI Enters Estate Homes Market*
- ◆ *CPI Relocates to Reliability Circle*



Three TSBA School of the Year Awards

## Grace Christian Academy Opens to Rave Reviews



Grace Christian Academy opened in September 2006, on time and under their \$8.2 million budget. The new high school garnered rave reviews during the open house, which was attended by hundreds of students, parents and interested community members.

GCA is the 10th school built by Construction Plus in the past five years. All have opened on time and under budget.

“This school is state-of-the-art and comparable with any new high school in our state,” said Don Criss, Grace Christian Academy’s principal and headmaster.

GCA was a Design-Build project, which integrates the entire design and construction project. **“USING DESIGN-BUILD SHAVED SIX MONTHS OFF OUR CONSTRUCTION SCHEDULE,” CRISS SAID. “CONSTRUCTION PLUS OVERCAME SEVERAL HURDLES AND DELIVERED TERRIFIC RESULTS FOR US AND OUR STUDENTS.”**



GCA serves a total of 600 students in grades K-12. The 45,000 square-foot facility includes fully equipped science labs and a collegiate-size gymnasium that meets TSSAA tournament requirements.

Grace Christian Academy is located at 5914 Beaver Ridge Road in Knoxville. The website is [www.gracechristianarms.org](http://www.gracechristianarms.org).



## Icearium Expands

Construction Plus, Inc. is building the 39,500 square-foot expansion of West Knoxville's Icearium, which is already East Tennessee's largest indoor ice sports facility. The \$2.5 million expansion adds indoor fields for soccer, in-line hockey, lacrosse, and volleyball, as well as a 2,400 square-foot elevated bar area with views of both fields.



**"CONSTRUCTION PLUS'S WORK ON PHASE I WAS MARKED BY ATTENTION TO DETAIL, QUALITY, AND COST SAVINGS; WE ARE EXCITED THAT THEY AGREED TO BUILD PHASE II"** said owner Basil Skelton.

Skelton said Construction Plus met the precise technical challenges presented by the original Icearium building.



"The Icearium is already the only facility of its kind between Virginia and Nashville", said owner Basil Skelton. "Phase II's features will allow families to spend an entire day at the Icearium with something for everyone to enjoy."

Construction is scheduled to be completed in early 2007.

## CPI Enters Design-Build of Estate Homes

Responding to the requests of our commercial clients to also serve them in their residential estate needs, CPI has designed and built its first estate size home. The \$2MM estate is the home of Drs. Shannon and Thomas Haskins III.

The 9000 SF home has 4 levels and almost every amenity available, including heated floors, home theatre, work out room, craft room, and a special playroom with hidden child size door openings for their children.

**"NEEDLESS TO SAY WE ARE ECSTATIC WITH THE RESULTS; THE HOUSE IS BEYOND OUR EXPECTATIONS AND BUILT TO THE HIGHEST LEVEL OF QUALITY,"** said Dr. Thomas Haskins.

The back of the house features a 1500 SF Ironwood deck with a 500 SF screen porch. Set on 3 acres, the home is accessed by a 220 foot concrete drive. Truly a custom built estate, designed hand in



hand with the Haskins at every detail, CPI is proud of the final product.





## Why CPI's Customers Come Back

When Julie Pauletto began making plans for a larger facility for Power Systems, Inc. there was only one construction company she had in mind to do the work: Construction Plus, Inc.

Ms. Pauletto's decision making process mirrors that of other Construction Plus clients who return to CPI when they have new projects.

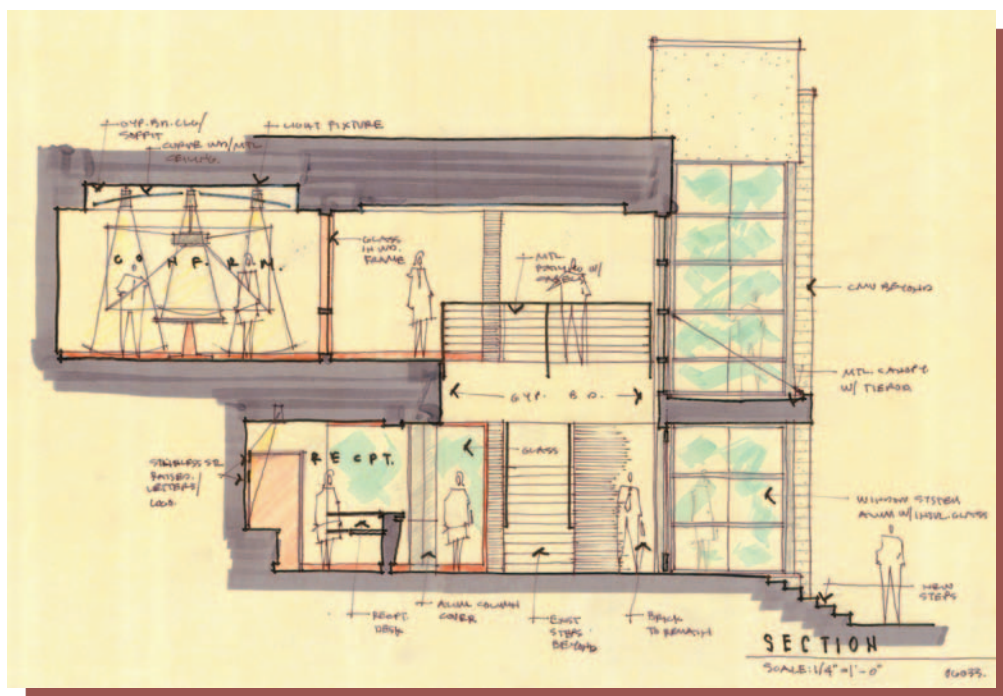
"It's simple...Construction Plus is who they say they are...they do what they say they're going to do," said Ms. Pauletto. "When Construction Plus makes a promise, it keeps that promise. It starts at the top, and Sandy Loy is always available, responsive, courteous, and attentive; he listens! And then addresses our needs directly... with professionalism."

**"I CAN COUNT ON CONSTRUCTION PLUS TO DO THEIR JOB, AND THAT ALLOWS ME TO FOCUS ON CONTINUING TO GROW MY BUSINESS, WITH PEACE OF MIND. THAT IS PRICELESS,"** she said.

Construction Plus President Sandy Loy said, "Ms. Pauletto's comments are the highest compliments a construction company can receive."

"There is a common theme we hear from CPI clients, that they experienced a level of personal attention and communication from CPI that they just didn't receive before coming to CPI," Loy said. "That's how we've built our reputation, being different, and that's how we're building our future. We don't just say we're different, our clients actually experience the difference."

Power Systems will move into their new facility in the Fall of 2007.





PRSRT STD  
U.S. POSTAGE  
PAID  
KNOXVILLE, TN  
PERMIT #1054

601 Reliability Circle ♦ Knoxville, TN 37932  
(865) 675-3600 ♦ Fax (865) 675-0009  
[www.constructionplus.com](http://www.constructionplus.com)

**Choose Construction Plus and Experience the Difference**



*What's inside:*

- ♦ *Grace Christian Academy Opens*
- ♦ *Power Systems III – Why CPI Customers Come Back*
- ♦ *Icearium Expands*
- ♦ *CPI Enters Estate Homes Market*



Pinnacle Award Winner  
for Business Excellence

## Construction Plus: Back to the Future

Construction Plus, Inc. has relocated its corporate offices to 601 Reliability Circle in west Knoxville, in the heart of the Tennessee Technology Corridor.

The relocation comes in part because CPI President Sandy Loy sold his interest in the building Construction Plus previously leased office space in. Community Tectonics Architects leases space in the same building.

Sandy Loy, Construction Plus president said, **“WHILE COMMUNITY**

**TECTONICS REMAINS A FIRM WE HOPE TO WORK WITH, BOTH COMPANIES UNDERSTAND OUR CLIENTS NEED TO BE CONFIDENT THERE ARE NO COMMON FINANCIAL INTERESTS BETWEEN THE COMPANIES OR THE OWNERS OF THE COMPANIES. THIS MOVE SHOULD CLARIFY THAT WE ARE INDEPENDENT COMPANIES.”**

This move will also make Construction Plus more efficient by consolidating its offices and warehouse needs in one location, Loy said.



[www.constructionplus.com](http://www.constructionplus.com)